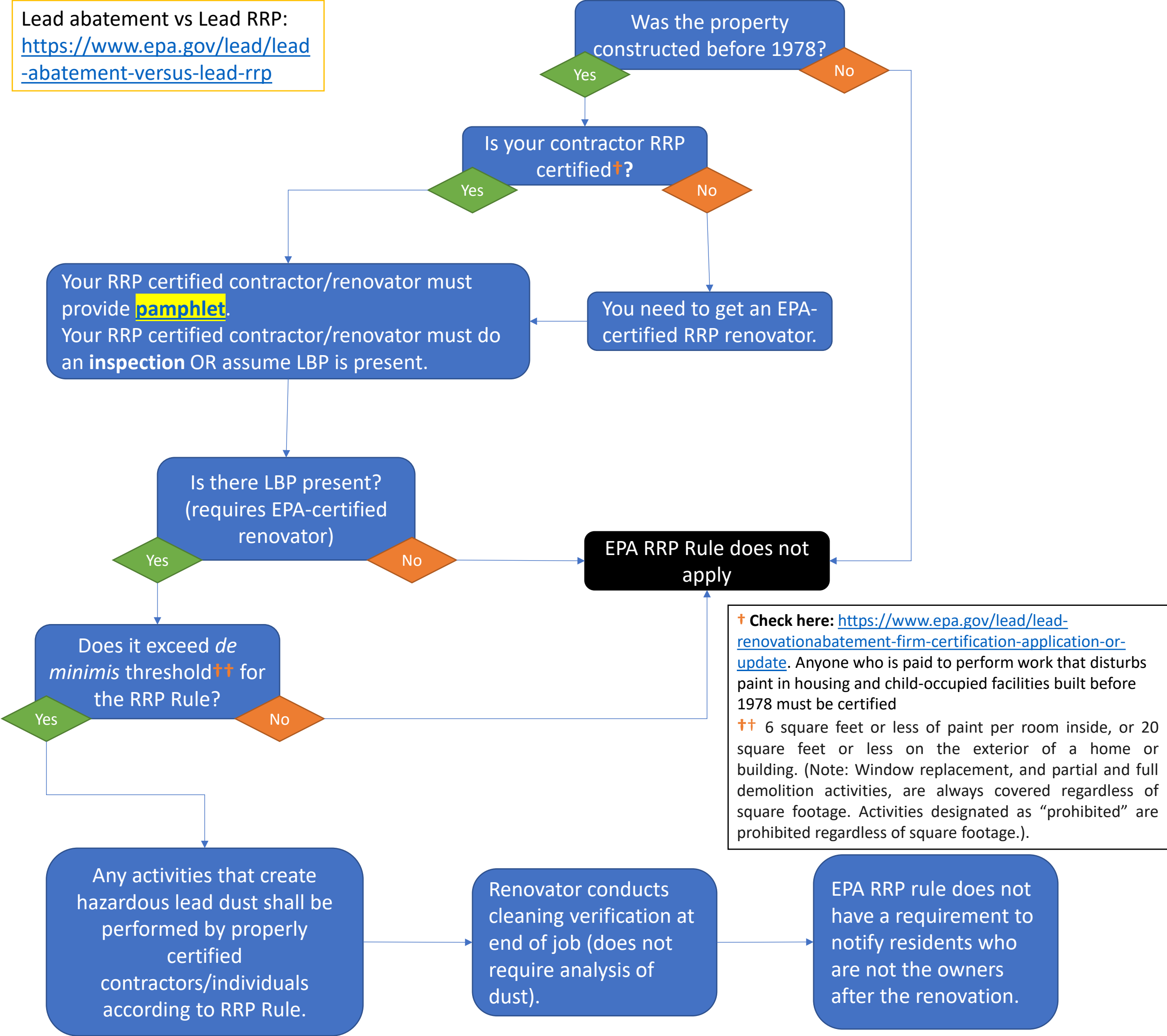


EPA RRP Rule Procedures

Lead abatement vs Lead RRP:
<https://www.epa.gov/lead/lead-abatement-versus-lead-rrp>

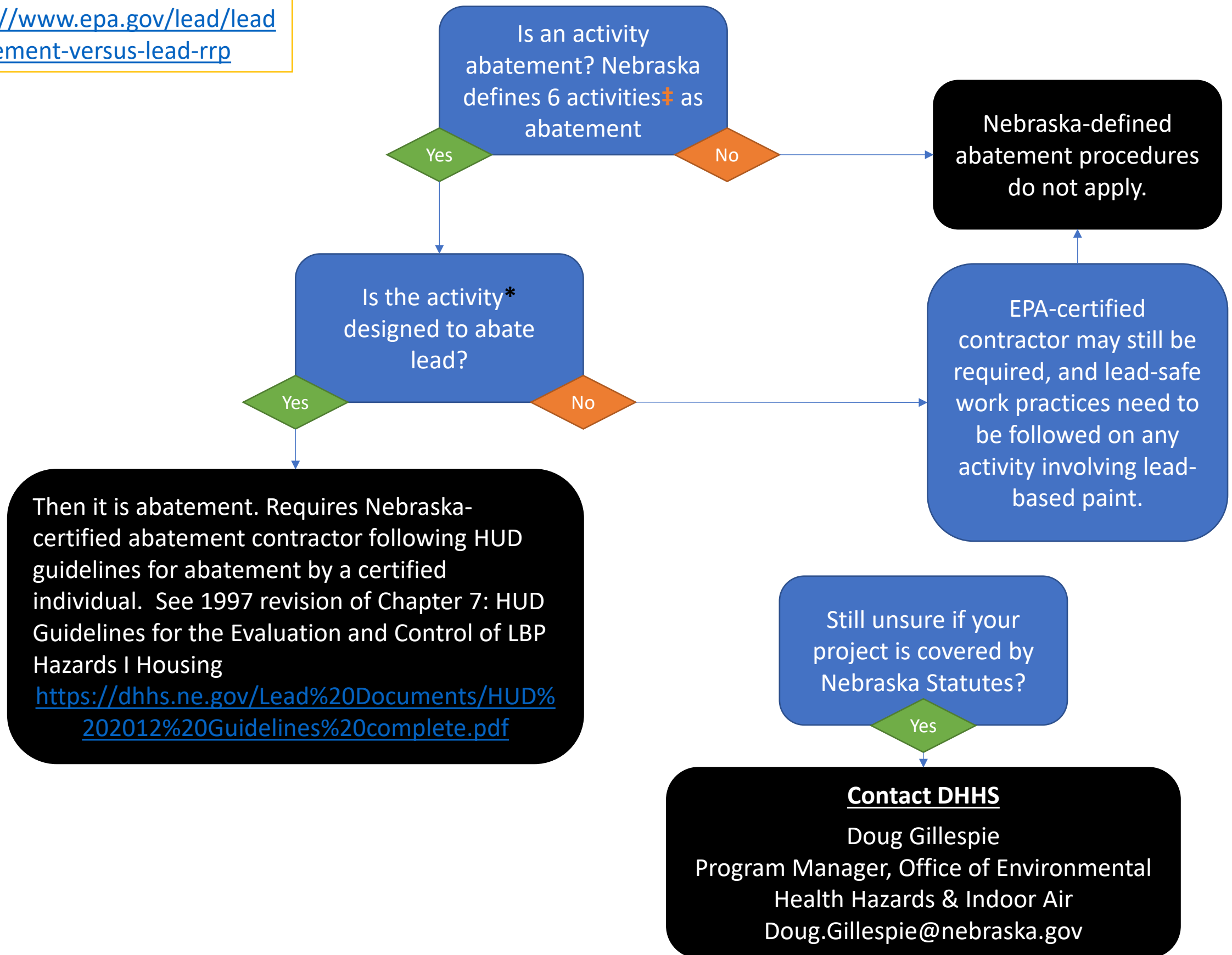


† Check here: <https://www.epa.gov/lead/lead-renovationabatement-firm-certification-application-or-update>. Anyone who is paid to perform work that disturbs paint in housing and child-occupied facilities built before 1978 must be certified

†† 6 square feet or less of paint per room inside, or 20 square feet or less on the exterior of a home or building. (Note: Window replacement, and partial and full demolition activities, are always covered regardless of square footage. Activities designated as "prohibited" are prohibited regardless of square footage.).

State of Nebraska Statutes

Lead abatement vs Lead RRP:
<https://www.epa.gov/lead/lead-abatement-versus-lead-rrp>



† See [https://www.nebraska.gov/rules-and-regs/regsearch/Rules/Health and Human Services System/Title-178/Chapter-23.pdf](https://www.nebraska.gov/rules-and-regs/regsearch/Rules/Health%20and%20Human%20Services%20System/Title-178/Chapter-23.pdf) 23-003 DEFINITIONS for more information.

*One project may include an activity designed to abate lead while other activities in the project may not be abatement; e.g., Replacing windows for the purpose of renovation would NOT count as LBP abatement. However, window replacement is covered by the EPA RRP rule.

NOTE: DED recommends seeking professional guidance as needed from DHHS, EPA, or a qualified LBP contractor.