



# INFRASTRUCTURE MATCH PROGRAM

PUBLICATION DATE: NOVEMBER 2021

In early 2019, Nebraska suffered record-breaking damage from severe winter weather, straight-line winds, and its worst flooding event in 50 years, leading to a federal major disaster declaration ([DR-4420](#)). To support long-term recovery, the State received a \$108.9 million grant through the United States Department of Housing and Urban Development (HUD) Community Development Block Grant Disaster Recovery (CDBG-DR) program. The State is using a portion of this grant funding to support infrastructure recovery.

## PROGRAM OVERVIEW

In response to the extensive damage from DR-4420, the Federal Emergency Management Agency (FEMA) provided funding to support infrastructure recovery under the [Public Assistance](#) (PA) program and [Hazard Mitigation Grant Program](#) (HMGP). However, recipients are required to pay up to 25% of the eligible costs through these programs. Therefore, communities still may face a financial burden in meeting local match requirements. **The purpose of the Infrastructure Match Program is to support communities in meeting the “non-federal share” requirement for approved PA and HMGP projects.**

### PUBLIC ASSISTANCE MATCH SUPPORT

Infrastructure Match Program awards are available to support local match requirements under FEMA’s PA grant program.

- Eligible activities correspond with FEMA PA Categories C-G, including permanent repairs to Roads and Bridges (C); Water Control Facilities (D); Buildings and Equipment (E); Utilities (F); Parks, Recreational Facilities, and Other Facilities (G).
- The federal share of assistance is 90% of the eligible cost for DR-4420.

### HAZARD MITIGATION MATCH SUPPORT

Awards are available to supply local match under FEMA’s HMGP grant program.

- Eligible activities include, but are not limited to, acquisition (e.g., “buyouts”), demolition, structural elevations, flood risk reduction, and infrastructure retrofits.
- The Federal share of assistance is 75% of the eligible cost for DR-4420.

Up to \$49,778,602 is available for the PA match awards out of a total of \$63,491,100 for the Infrastructure Match Program.

Up to \$13,712,498 is available for the HMGP match awards out of a total of \$63,491,100 for the Infrastructure Match Program.



# APPLICANT ELIGIBILITY

All entities who have received FEMA PA and/or HMGP program funding can apply for the Infrastructure Match Program. This specifically includes:

- State and local governments;
- State agencies and authorities, including housing agencies and publicly assisted housing;
- Public Schools (K-12);
- Universities;
- Critical infrastructure facilities as defined by FEMA (e.g., water, wastewater facilities);
- Natural Resource Districts; and
- Other local program applicants eligible to receive federal recovery funds, including eligible private non-profit organizations.

# PROJECT INFORMATION

Eligible project activities for the Infrastructure Match Program must have been funded through FEMA-PA and/or HMGP funds and be eligible for Match. These projects may include acquisition of real property, public facilities and improvements, code enforcement, clearance, public services, and project planning. Projects funded must have a tieback to DR-4420 storm event. The maximum award amount is \$10,000,000.

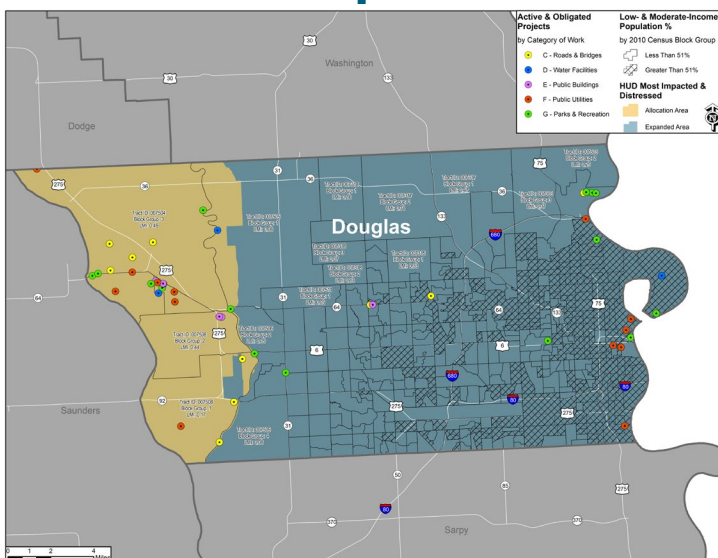
## STATE PROJECT PRIORITIES

The State will prioritize projects that increase the capacity for resilience by upgrading stormwater and drainage infrastructure, emphasize green infrastructure, demonstrate a tie to housing recovery, align with local planning efforts, and/or align with needs outlined in the [Unmet Needs Assessment](#) and Nebraska's Baseline Conditions and Impact Assessment Report.

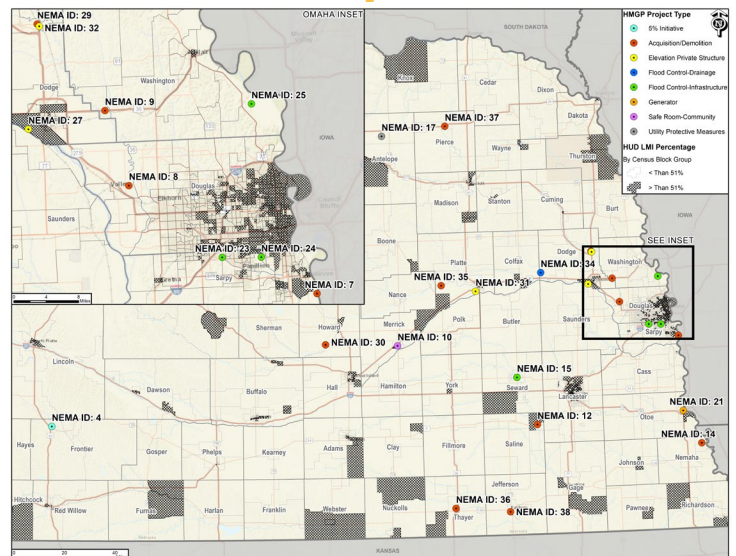
# KEY PROJECT LOCATIONS

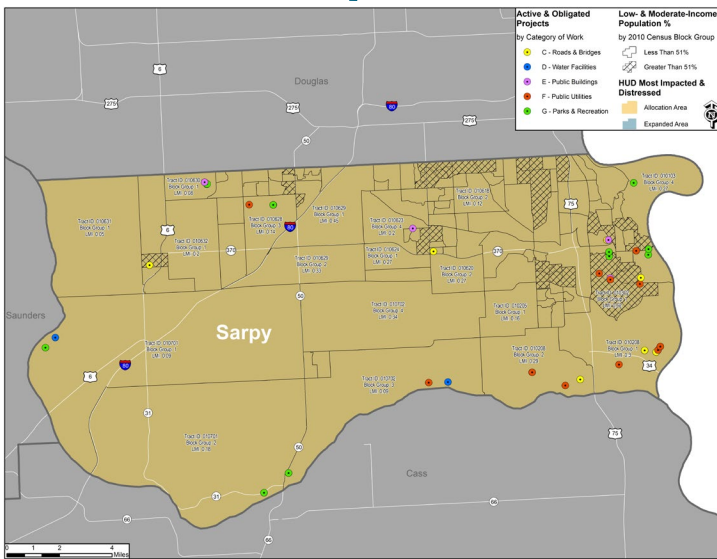
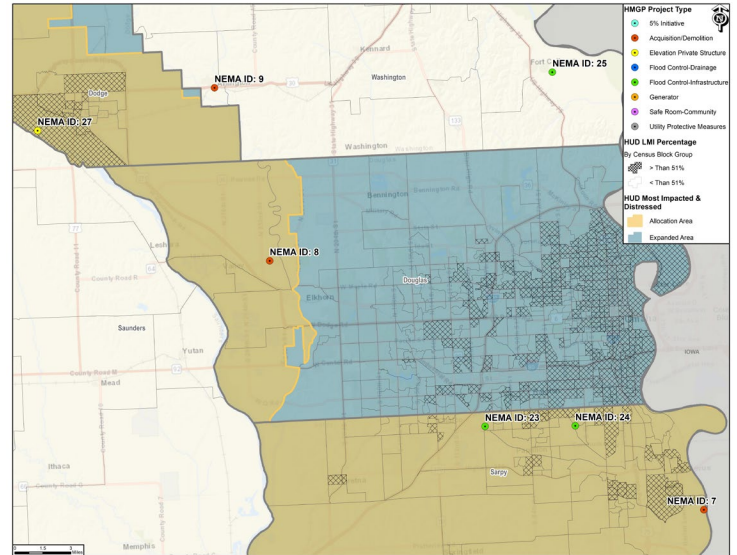
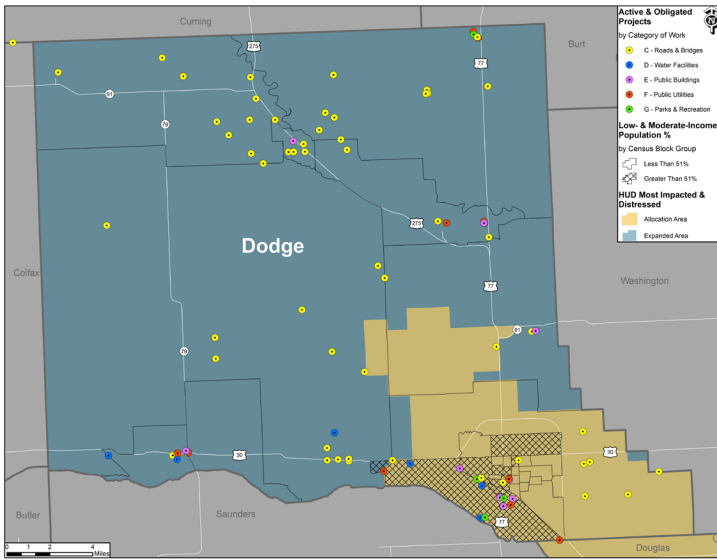
The following maps identify the geographic locations of Douglas, Dodge and Sarpy County which have been identified as the HUD most impacted and distressed (MID) areas. The State is obligated to spend 80% of all allocated CDBG-DR funds in these HUD-identified MID areas. The State is also obligated to spend 70% of funds meet the Low- and Moderate-Income (LMI) National Objective. These maps do not represent the extent of projects eligible to be funded.

## PA PROJECTS



## HMGP PROJECTS





The Infrastructure Match Program **Frequently Asked Questions (FAQs)** are available in the project toolbox via the link [here](#). These FAQs will be periodically updated to account for clarified or changed program information. Should you have additional questions, please reach out to the Disaster Recovery Team at Nebraska Department of Economic Development.